



شركة رابغ الحديثة المحدودة للتجارة والمقاولات

**Rabigh Modern Company Limited Trading & Construction**



**Head Office**

Kingdom of Saudi Arabia, Riyadh | Olaya, Al-Nimer Center (1)  
Box300195 - Riyadh 1137 | T/F+966 (11) 461 3404 | Webwww.rmco-sa.com | Emailinfo@rmco-sa.com

**Rabigh Branch**

Kingdom of Saudi Arabia, Rabigh | P.O. Box497 - Rabigh 21911 |  
Tel+966 (19) 4993471 | Fax+966 (11) 499 1095 | Webwww.rmco-sa.com | Emailinfo@rmco-sa.com

# Table of Content



	Introduction
	<i>Message from The Chairman</i>
	<i>Vision &amp; Mission</i>
	<i>Company Goals</i>
	<i>Resources</i>
	<i>Quality Health Safety and Environment</i>
	<i>Quality Assurance and Quality Control Plan</i>
	<i>Company Organization Chart</i>
	<i>Legal Documents &amp; Certifications</i>
	<i>Company Location</i>
	<i>Cost, Scheduling &amp; Procurement Capabilities</i>
	<i>Construction</i>
	<i>Industrial Services - Electro-Mechanical</i>
	<i>Services</i>
	<i>Transportation &amp; Heavy Equipment</i>
	<i>Vendorships</i>
	<i>Client List</i>



**RMCO**

ARAB MODERN COMPANY [www.rmco-sa.com](http://www.rmco-sa.com)



## 1. INTRODUCTION



# RMCO

Is a Saudi Based ISO 9001 : 2008, 14001:2004

OHSAS 18001:2007 Certified Construction &

Services provider Company based in Kingdom

of Saudi Arabia, providing comprehensive services to Government and private sectors such as, building construction, Heavy Equipment, Petrochemical, Industrial, and civilian sectors. Our comprehensive assets, operational procedures, proactive maintenance, and Health safety Environment guidelines has virtually shows our edges with our competitors within the industry and equally important is the trust of our clients vested on us based upon our technical capabilities, range of services and experience. One of the key factors that have made **RMCO** a leading solutions provider is our determination to provide cutting edge technologies and solutions which value far exceeds their costs. Our focus on every project is to develop and secure company's commitment to implement real-world solutions that produce the greatest return of investment to our clients – regardless of the size or complexity of their requirements or the challenges and opportunity as they are facing. Here under we introduce further details for **RMCO** vision, core value, company goals and various activities/divisions.



**RMCO**

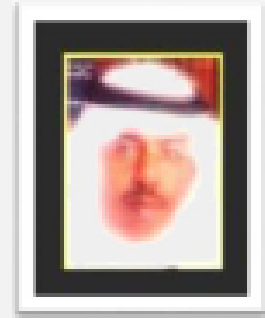
ARABIA MODERN COMPANY [www.rmco-sa.com](http://www.rmco-sa.com)



## 2. MESSAGE FROM CHAIRMAN

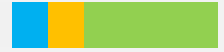


**I** the Chairman of **RMCO** – Rabigh Modern Company proud to introduce our company as one of the first experienced companies in the construction, Services, transportation, heavy equipment, trading and petroleum sectors in Rabigh city - Kingdom of Saudi Arabia. Since the establishing of the company at 2005 we have gained an excellent reputation due to our outstanding rendered services and our ability to manage any load of work. I will here below introduce some details concerning the different activities/divisions of RMCO and how they are organized. I believe that the real values of our company are our commitment to its mission, vision, and core values. Due of this commitment to our values, RMCO has been a leader from the beginning in every industry in which RMCO do business. Regardless of being a young company, RMCO is formed on a prosperous legacy of business experience to grow worldwide with a mission of providing a portfolio of the highest quality products, services, and industrial solutions for various industries and sectors. In order for us to focus on market needs, RMCO vision is to build a strong network of companies around the world to beal way close to its clients and within their reach .As the chairman of RMCO, I will encourage and support members of the board of directors, RMCO branches directors, RMCO employees, and myself to stick with and respect our philosophy of Accountability and Excellence, values of Integrity, beliefs of Motivation and inspiration, and our standard of Safety and health in all our business dealings. We expect our clients and business partners to respect our values. Since it was formed in 2005, I am proud and honored to say that RMCO is now truly known as the legacy of the future and it will remain so for generations to come. Finally, On behalf of the board members, I would like to thank RMCO Clients, **Business Partners**, **Employees & Communities** for their support and effort to build this legacy of the future.





## 1. Contractor / Vendors Numbers.



**RMCO** is approved for the following Saudi Arabian Govt. & Semi Govt. Organization as a vendor or contractor.

Sr.	Description	Vendor No#
01	SAUDI ARABIAN OIL COMPANY (SAUDI ARAMCO)	10038685
02	SAUDI ELECTRICITY COMPANY (SCECO)	5002142
03	RABIGH REFINING & PETROCHEMICAL	100551
04	ROYAL COMMISSION FOR JUBAIL & YANBU (RCJY)	2794



### VISION

- At RMCO, we are committed to provide cutting edge products, services, and solutions that fulfill the needs of our clients while adhering to our goal of safety, health, and environmental guiding principles. RMCO is committed to build a strong and beneficial relationship with clients, business partners, and societies and communities in countries and regions in which we work.

### MISSION

- We believe that jobs, whether big or small, must be done well, on time, and meet or exceed the needs of our clients. In order to perform this, RMCO is dedicated to growth and expansion around the world through branches managed and directed by qualified entrepreneurs.

### 3. COMPANY GOALS



To operate a profitable company with controlled growth objectives



To operate under the highest moral and ethical standards.



To operate a quality company with absolute commitment to the public health and the environment.



To insure that safety comes first in all matters related to our operation.



To strive for customer satisfaction by conducting business professionally in every aspect of our operations.



To be an equal opportunity employer.

إحترام  
**RESPECT.**

To have absolute respect to the local customs / traditions and religion in every country we operate in.



**Rmco**

ARAB MODERN COMPANY

[www.rmco-sa.com](http://www.rmco-sa.com)

## 4. RESOURCES



### PROCUREMENT CAPABILITIES:

RMCO is currently comprises of 3 main departments.

1. Construction.
  - (a) Civil Department.
  - (b) Electro Mechanical Division.
2. Services Department.
3. Heavy Equipment & Transport Department.

The man power resources contribution of all the departments are as follows.

#### ⇒ SUMMARY OF MANPOWER RESOURCES

Skill	Currently in Kingdom
Civil Department	234
Electro Mechanical Department	85
Services Department	69
Heavy Equipment Department	43
Others	41
<b>TOTAL</b>	<b>472</b>



## STORAGE & STAGING FACILITIES:



Described below are equipment maintenance and storage facilities reflecting the size of RMCO facilities, as well as the number and occupation of workers assigned thereon.

### ⇒ DESCRIPTION OF EQUIPMENT MAINTENANCE & STORAGE FACILITIES

#### **RABIGH:**

Our Warehouse (Storage) and Equipment Maintenance Facilities in this Rabigh Airport and Opposite Side of Rabigh Power Plant Rabigh total and is located on Old Madinah Road Near up to 5,800 sq.m. This unit is staffed by,

Warehouse Operations	Equipment Maintenance
<ul style="list-style-type: none"><li>a) One (1) Ware house Supervisor</li><li>b) Two (2) Inventory Clerks</li><li>c) Four (4) Forklift Operators</li><li>d) Eight (8) Laborers/Helpers</li></ul>	<ul style="list-style-type: none"><li>a) Three (3) Mechanic</li><li>b) Two (2) Mechanic Helper</li><li>c) One (1) Auto Electrician</li><li>d) One (1) Radiator/Tire man</li></ul>

Our Equipment Maintenance Facilities in Rabigh Area are located at RMCO Compound near RMCO Head Office and Rabigh Airport, Rabigh which is staffed by:

- a) Mechanic
- b) Mechanic Helper
- c) Auto Electrician
- d) Radiator/Tireman

## 1. QUALITY HEALTH SAFETY AND ENVIRONMENT



### GENERAL

The Primary aim of an effective Safety and Loss Prevention program is to protect the life, health and safety of all personnel and eliminate the possibility of damage to property and equipment while undertaking a specified project. Operations Management is responsible for the Implementation of the Company's Loss Control Program.

It is a corporate commitment that accidents causing injuries to people, damage to properties, or loss of products are to be prevented. To achieve this objective, the following principles and practices are to be applied:

- ⇒ A Safe Work Environment is provided by careful design of new facilities, purchase of Safe Equipment and by elimination of Hazards. Insituations where danger and hazards are part of the project and inevitable, the harmful effects are minimized through environmental controls, training on safe work methods, and by enforcing the use of Personal Protective Equipment(PPE).
- ⇒ Sufficient qualified manpower shall be provided to meet the Operations, Maintenance and Service requirements.
- ⇒ Employees' physical and mental abilities are considered to ensure proper job placement.
- ⇒ Employees are continuously trained to develop and maintain the skills required in their work.
- ⇒ Inculcate in employees their personal responsibility and liability to prevent injury to himself, others, and damage to property.
- ⇒ Communication between Employees and Supervisors is encouraged to expedite handling of suggestions for the elimination of work hazards. The upward communication system is ensured to be always available to facilitate safety suggestions.
- ⇒ All effective motivation methods are employed to encourage employee participation in Loss
- ⇒ Prevention

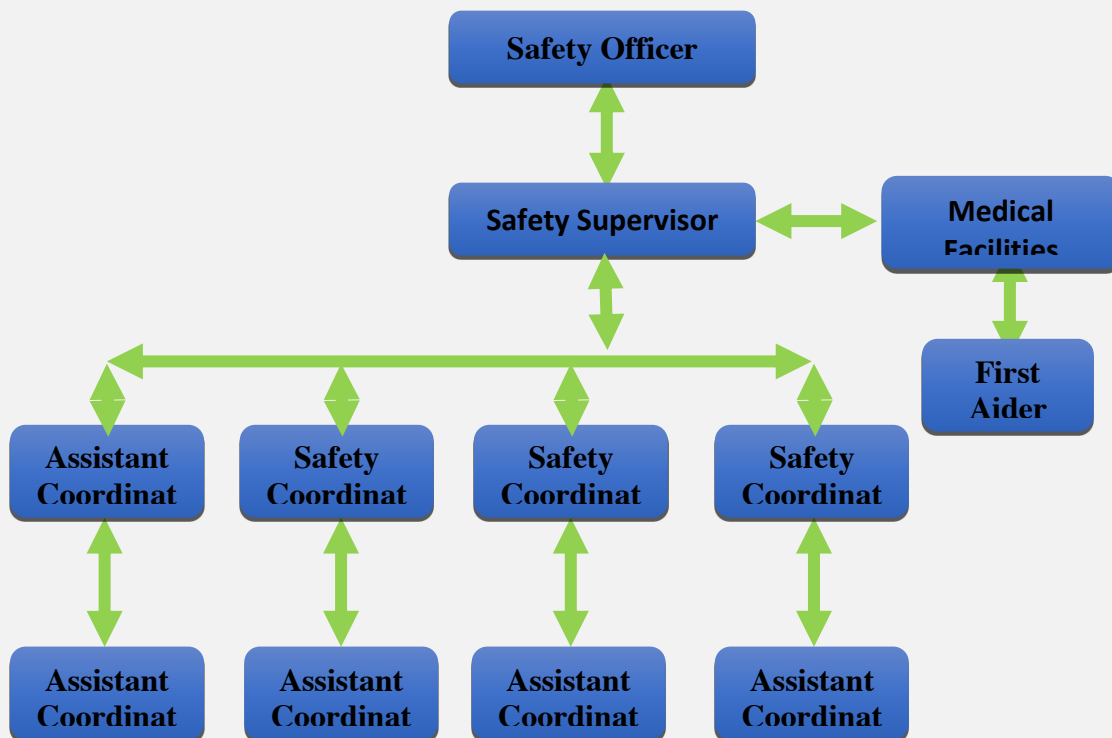
### POLICY:

Rabigh Modern Company Limited considers Safety the very top priority at all times. It is the policy of RMCO that not one single employee is put at risk, or endangered by any Procedure or Standard practices. The Company will abide by all letters of Saudi Government Regulations, client's Safety Regulations published before, after, or within any contract. When conflicts arise between S.A.G regulations and the client regulations then stricter opens prevail. No employee is allowed to operate any powered machinery without a S.A.G. license, if required. All managerial and supervisory staff of all levels is always reminded to enforce safety and well--being of employees, in addition to productivity. It is also advised that when they are in doubt aboutSafety Standards prevailing on Site, then contact or consult the Loss Prevention Representative Our management a sets high standards for employee safety, health and Welfare Protection. Recognizing these in the best interest of modern management practices, the Company is continuously working on:



- ⇒ The application of the Safety Rules and Regulations, General Instruction, Codes and Procedures as set by the Client as well as RMCO.
- ⇒ Constant adherence to safe operating procedures and practices so as to ensure effective control against accidents and illnesses.
- ⇒ Providing an adequate and safe place to accommodate our personnel on site with potable water, first aid facilities and proper sanitation.
- ⇒ To educate all personnel on safety methods, procedures, using personal protective equipment, and existing restrictions prevailing on site.
- ⇒ Conduct ten--minute safety discussions, organized and implemented by each crew supervisor every working day. Minutes of the meeting will be forwarded to the client representative.
- ⇒ It is the responsibility of each individual employee to support and promote Safety and Health processes in order to ensure a safe work environment.

#### **SAFETY TEAM ORGANIZATION CHART**



## 2. QUALITY ASSURANCE & QUALITY CONTROL PLAN

### GENERAL

This Procedure is aimed at establishing requirements for the Quality Assurance and Quality Control Program to be implemented by Rabigh Modern Company Ltd (RMCO) in any given Project. The Standard Specifications and Drawings for any project adequately cover the Materials & Construction Quality Control and Quality Assurance phases of the Work. In preparing this program, RMCO Quality Control Unit uses pertinent portions of the Standards and Specifications, emphasizing the important data and/or added other information that may be relevant to the Work. RMCO will undertake and document all Quality Control functions to ensure that the Work is carried out and completed in accordance with the following:

- ⇒ Contract Documents
- ⇒ Approved Contract Drawings
- ⇒ Client QA/QC Manual

The Program includes Material Quality Control, Construction Quality Control, Tolerances and Tests, applicable Standards and allowable requirements. RMCO will provide additional technical instructions to our Project Manager to supplement the requirements of the program.

### POLICY

It is the policy of RMCO to ensure that construction of any project shall comply with Contract Specifications, Drawings, and Local Regulations and in good Construction Engineering Principles and Practices. To comply with the above Policy, a continuous Program of construction Quality Control shall be implemented and followed. All related Inspection and Quality Control operations will be recorded appropriately and to supplement the basic requirements and procedures of this program. Our Head Office in Rabigh will occasionally provide additional instructions, technical and/or administrative assistance to the field Quality Control Personnel. The primary policy of RMCO is to maintain the highest standard of quality work that meets, if not exceeds its client's standards and/or requirements in order to achieve such Standard, RMCO has developed its Quality program with inclusion of elements of ISO--9001--2000 & further

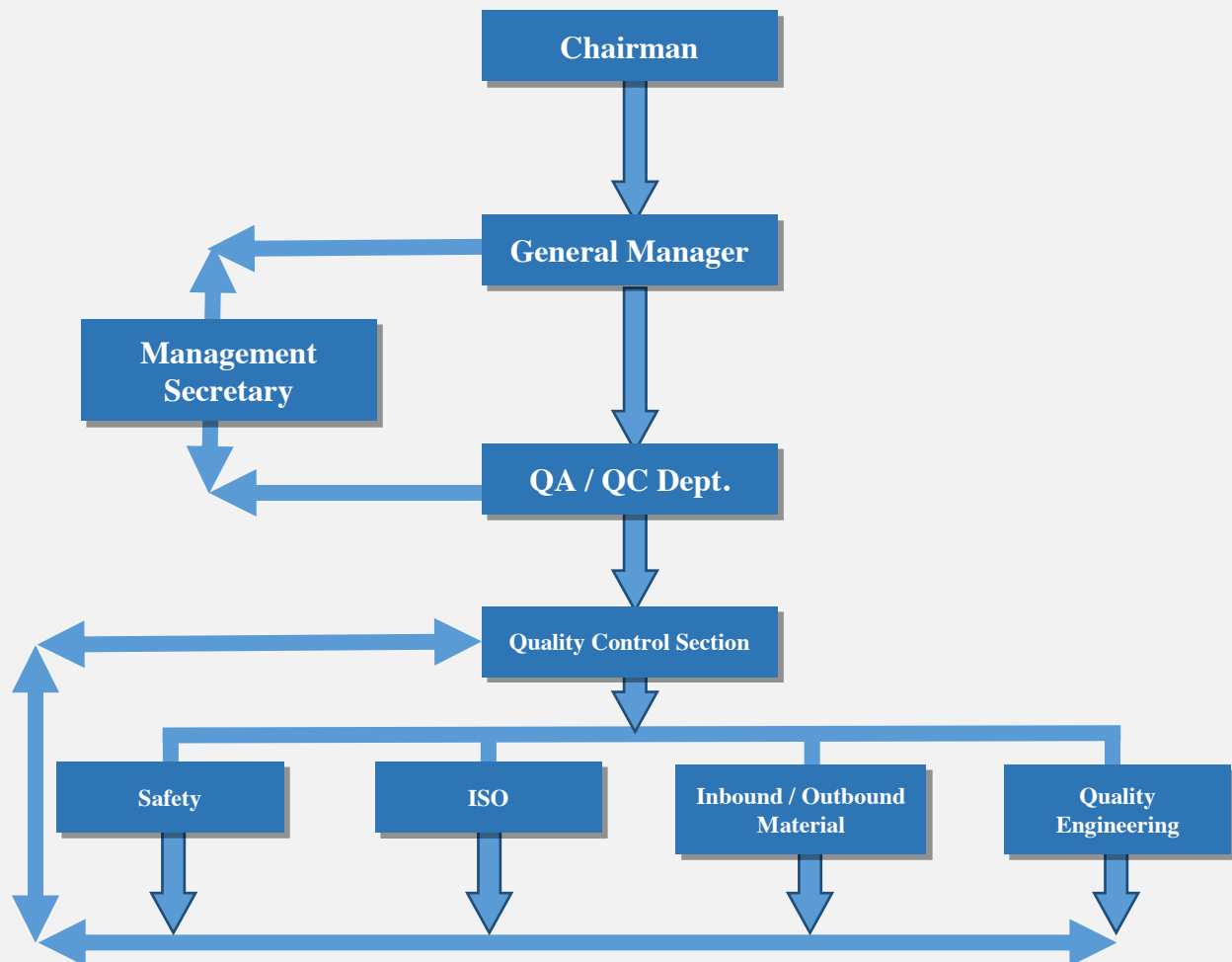
- ⇒ By developing regular communication with the Quality Personnel
- ⇒ Conducting management reviews
- ⇒ Ensuring the availability of necessary resources
- ⇒ Developed a plan as per the Guidelines of SAEP—1154

RMCO shall be responsible for the strict implementation of Quality Assurance and Quality Control of the Project embodied in the Project Quality Plan (PQP) as per SAEP--1154 and shall provide the following:

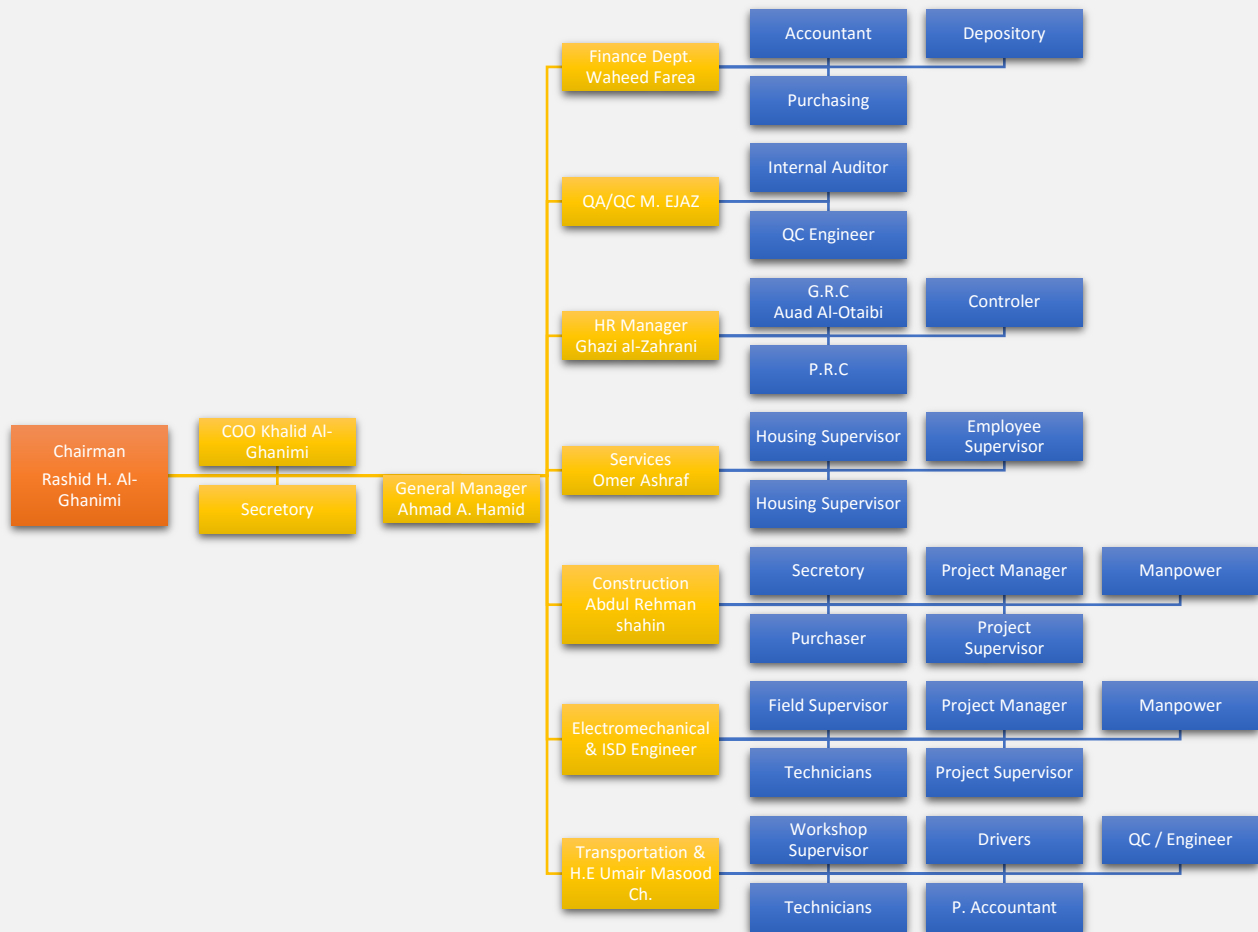
- ⇒ Quality Assurance and Quality Control Organization
- ⇒ Facilities, Tools and Equipment for the QA/QC organization to carry out best its Functionalities
- ⇒ Quality Assurance and Quality Control Manual (QA/QC Manual) or the so-called PQP which shall define the organization, responsibilities and procedures in sufficient detail with clarity so that those responsible for QA/QC shall be fully aware of their specific responsibilities and submittal requirements

The Client shall approve the Project Quality Plan along with its QA/QC Personnel and/or Chart. This Quality Plan establishes Quality Performance Indices and this shall be benchmarks for Project.

#### QA/QC ORGANIZATION CHART



### 3. COMPANY ORGANIZATION CHART







# شهادة اشتراك



الغرفة التجارية الصناعية بجدة  
JEDDAH CHAMBER OF COMMERCE & INDUSTRY

قطاع خدمات الإشتراكات والتصديق  
إدارة الإشتراكات والتصديق

رقم الإشتراك : ١٠٣٣٦٧  
تاريخ الإصدار : ١٤٣٧/٠١/٠١ هـ  
الدرجة : الثانية  
تاريخ الإنتهاء : ١٤٣٧/١٢/٢٩ هـ

تشهد الغرفة التجارية الصناعية بجدة بأن  
شركة رابغ الحديثة للتجارة والمقاولات  
ذات مسئولية محدودة

رقم السجل التجاري / الترخيص ٤٦٠٢٠٠٢١٥٨ تاريخه ١٤٢٦/٠٧/٢٣ هـ مسجل لديها لعام ١٤٣٧ هـ

مدير قطاع خدمات الإشتراكات والتصديق  
محمد بن أحمد العطاس

ينتهي سريان هذه الشهادة بنهاية العام الهجري بعالية (انظر الخلف) وأي كشط أو تعديل بهذه الشهادة تعتبر لافيه  
يشطب الإنتساب في حالة شطب السجل التجاري المذكور في هذه الشهادة



## شهادة اشتراك

غرفة الرياض  
Riyadh Chamber

Unified Membership No. : 101000 100196

رقم العضوية الموحد : ١٠١٠٠٠١٠٠١٩٦

Date of Issue : 29/02/2016

تاريخ الأصدار : ٢٠١٦/٠٢/٢٩

Classification : Second

الدرجة : الثانية

Riyadh Chamber of Commerce and Industry certifies that:

تشهد الغرفة التجارية الصناعية بالرياض بأن :

شركة رابغ الحديثة للتجارة والمقاولات

Commercial Register No 1010428562

المقيدة بالسجل التجاري / الترخيص رقم ١٠١٠٤٢٨٥٦٢

The Certificate expires on 31/08/2020

٢٠٢٠/٠٨/٣١ م

وينتهي سريان هذه الشهادة في

فاكس: 4613404

هاتف: 4613404

الرمز: 11372

ص. ب: 30012

مدير عام خدمات الاشتراكات

riyadhchamber

in ٧ f 8+



تصفح موقع بنك المعلومات الاقتصادية <http://databank.org.sa>

بسم الله الرحمن الرحيم

المملكة العربية السعودية  
وزارة الداخلية  
مصلحة الزكاة والدخل



فرع الرياض



رقم الشهادة : ١٠٢٠٠١٠٠٥٠  
التاريخ : ١٤٣٧/٠٨/١٩ هـ

الرقم المميز : ٣٠٠٧٩٣٠٨٢١

### شهادة

تشهد مصلحة الزكاة والدخل بأن المكلف / شركة راينج الحديثه للتجارة والمقاولات  
وسجل تجاري رقم ١٠١٠٤٢٨٥٦٢ رخصة رقم ٥٤٦٤  
قدم إقراره عن الفترة المنتهية في ٢٠١٥/١٢/٣١ م  
وقد منح هذه الشهادة لتمكينه من إنهاء جميع معاملاته بما في ذلك صرف مستحقته النهائية عن العقود.  
يسري مفعول هذه الشهادة حتى تاريخ ١٤٣٨/٠٨/٠٤ هـ الموافق ٢٠١٧/٠٤/٣٠ م.  
(الرابع من شعبان ألف و أربعمئة و ثمانية و ثلاثون هجري)

الفروع في النموذج المرفق  
الختم الرسمي

الوظيفة : مدير عام فرع المصلحة بالرياض المكلف  
الاسم : خالد عبيد حماد الظاهري  
التوقيع :



RMCO

www.rmco-sa.com

بسم الله الرحمن الرحيم

المملكة العربية السعودية  
وزارة التجارة  
مصلحة الزكاة والدخل



فرع الرياض

رقم الشهادة : ١٠٢٠٠١٠٠٥٠  
التاريخ : ١٤٣٧/٠٨/١٩ هـ  
صفحة رقم : ١

شهادة

الرقم المميز: ٣٠٠٧٩٣٠٨٢١

قائمة فروع المكلف شركة رايع الحديث للتجارة والمقاولات  
وسجل تجاري رقم ١٠١٠٤٢٨٥٦٢ رخصة رقم ٥٤٦٤

رقم السجل	الرخصة	إسم الفرع	المدينة
٤٦٠٢٠٠٢١٥٨	٣٦/٩٠٦	فرع شركة رايع الحديث للتجارة والمقاولات	رايع
٤٦٠٢٠٠٢٤٩٦	١٤٣/١٦	فرع شركة رايع الحديث للتجارة والمقاولات	رايع
٤٦٠٢٠٠٣٦٠٦	١٤٣/٦	شقق الأجنحة الثلاثة للوحدات السكنية	رايع
٤٦٠٢٠٠٤٠٧٢	١٤٣/١٢	شركة وردة الشرق المميزة للوحدات السكنية المفروشة المحدودة	رايع
٤٦٠٢٠٠٤٦٨٩	١٤٣/٨	فندق النخلة العربية فرع شركة رايع الحديث للتجارة والمقاولات المحدودة	رايع
٤٦٠٢٠٠٢١١٢		شركة انوار رايع للوحدات السكنية المفروشة فرع شركة رايع الحديث للتجارة	رايع



RMCO

www.rmco-sa.com



GS CA



PETRO RABIGH II PROJECT  
INTERCONNECTING PACKAGE (UO1)

# Certificate of Appreciation

is awarded to:

**Rabigh Modern Company (RMCO)**

*In recognition of your outstanding contribution in achieving  
Ten (10) Million Safe Man-Hours Without Loss Time Injury (LTI)  
under GS Construction Arabia Co. Ltd.*

*This certificate has been awarded on January 02, 2015 in Petro Rabigh II Project,  
Saudi Aramco & Sumitomo Chemical, Kingdom of Saudi Arabia*

Ji Won Choi  
GS HSE Manager

Petro Rabigh II Project(UO1)

Jong Kwan Oh  
GS Project Manager

Petro Rabigh II Project(UO1)

No. (GIB)



RMCO

www.rmco-sa.com









**BUREAU VERITAS**  
Certification



**RABIGH MODERN COMPANY LTD. (RMCO)**

Building # 5241, Al-Samad District - King Abdul Azeez Street  
P. O. Box 497, Rabigh Zip Code 25728 - 9023  
Rabigh City, Kingdom of Saudi Arabia

*Bureau Veritas Certification Holding SAS – UK Branch certify that the Management System of the above organisation has been audited and found to be in accordance with the requirements of the management system standards detailed below*

**ISO 9001:2008**

*Scope of certification*

**Contracting Services for Buildings & Infrastructures (Civil, Electrical and Mechanical Constructions).  
General Services (Accommodation, Transportation, Heavy & light Equipment's Renting Services)**

Certification cycle start date: **21 MAY 2016**

Subject to the continued satisfactory operation of the organisation's Management System, this certificate expires on: **14 SEP 2018**

Original certification date: **21 MAY 2016**

Certificate No. **IND 16.5356/U/Q**

Version 1, Revision date: **21 MAY 2016**

*Signed on behalf of BVCH SAS UK Branch*



008

Certification body address: 66 Prescott Street, London E1 8HG, United Kingdom

Local office: Office # 6, 2nd Floor, Al Wafa Towers, King Faisal Bin Abdul Aziz Street, Al Raka District  
P.O.Box 20189, Thoqba 31952, Kingdom of Saudi Arabia.

Further clarifications regarding the scope of this certificate and the applicability of the management system requirements may be obtained by consulting the organisation.  
To check this certificate validity, please call: +966 3 8457701

Page 1 of 1



**RMCO**

RABIGH MODERN COMPANY LTD. [www.rmco-sa.com](http://www.rmco-sa.com)

**BUREAU VERITAS**  
Certification



**RABIGH MODERN COMPANY LTD. (RMCO)**

Building # 5241, Al-Samad District - King Abdul Azeez Street  
P. O. Box 497, Rabigh Zip Code 25728 - 9023  
Rabigh City, Kingdom of Saudi Arabia

*Bureau Veritas Certification Holding SAS – UK Branch certify that the Management System of the above organisation has been audited and found to be in accordance with the requirements of the management system standards detailed below*

**ISO 14001:2004**

*Scope of certification*

**Contracting Services for Buildings & Infrastructures (Civil, Electrical and Mechanical Constructions).  
General Services (Accommodation, Transportation, Heavy & light Equipment's Renting Services)**

Certification cycle start date: **21 MAY 2016**

Subject to the continued satisfactory operation of the organisation's Management System, this certificate expires on: **14 SEP 2018**

Original certification date: **21 MAY 2016**

Certificate No. **IND 16.5356/U/E**

Version **1**, Revision date: **21 MAY 2016**

Signed on behalf of BVCH SAS UK Branch



008

Certification body address: 66 Prescott Street, London E1 8HG, United Kingdom  
Local office: Office # 6, 2nd Floor, Al Wafa Towers, King Faisal Bin Abdul Aziz Street, Al Raka District  
P.O.Box 20189, Thaqba 31952, Kingdom of Saudi Arabia.

Further clarifications regarding the scope of this certificate and the applicability of the management system requirements may be obtained by consulting the organisation.  
To check this certificate validity, please call: +966 3 8457701

Page 1 of 1



**RMCO**

RABIGH MODERN COMPANY [www.rmco-sa.com](http://www.rmco-sa.com)



**BUREAU VERITAS**  
Certification



**RABIGH MODERN COMPANY LTD. (RMCO)**

Building # 5241, Al-Samad District - King Abdul Azeez Street  
P. O. Box 497, Rabigh Zip Code 25728 - 9023  
Rabigh City, Kingdom of Saudi Arabia

*Bureau Veritas Certification Holding SAS – UK Branch certify that the Management System of the above organisation has been audited and found to be in accordance with the requirements of the management system standards detailed below*

**ISO 9001:2008**

*Scope of certification*

**Contracting Services for Buildings & Infrastructures (Civil, Electrical and Mechanical Constructions).  
General Services (Accommodation, Transportation, Heavy & light Equipment's Renting Services)**

Certification cycle start date: **21 MAY 2016**

Subject to the continued satisfactory operation of the organisation's Management System, this certificate expires on: **14 SEP 2018**

Original certification date: **21 MAY 2016**

Certificate No. **IND 16.5356/U/Q**

Version 1, Revision date: **21 MAY 2016**

*Plengyuth*

Signed on behalf of BVCH SAS UK Branch



008

Certification body address: **66 Prescott Street, London E1 8HG, United Kingdom**

Local office: **Office # 6, 2nd Floor, Al Wafa Towers, King Faisal Bin Abdul Aziz Street, Al Raka District  
P.O.Box 20189, Thaqba 31952, Kingdom of Saudi Arabia.**

Further clarifications regarding the scope of this certificate and the applicability of the management system requirements may be obtained by consulting the organisation.  
To check this certificate validity, please call: **+966 3 8457701**

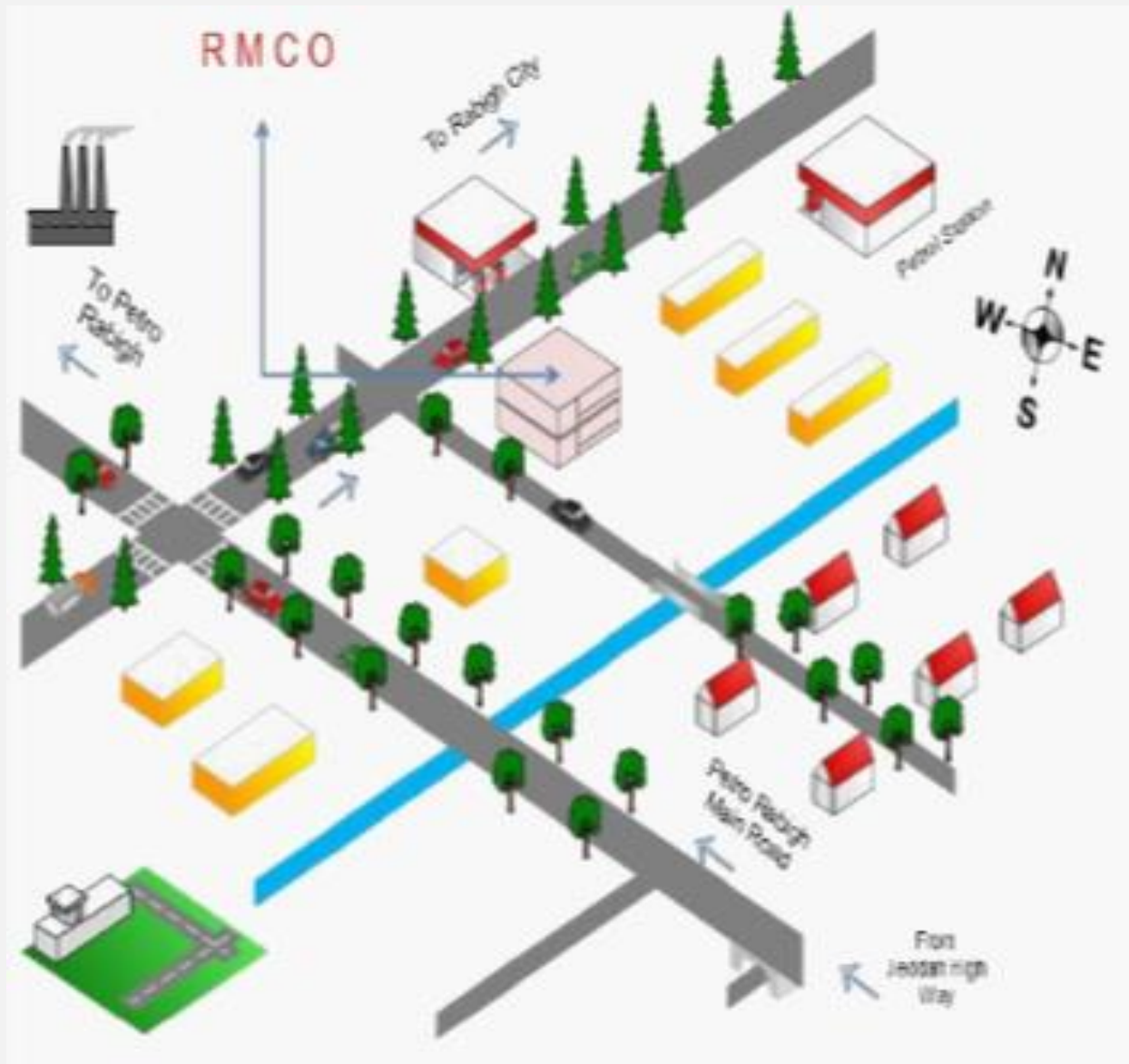
Page 1 of 1



**RMCO**

RABIGH MODERN COMPANY [www.rmco-sa.com](http://www.rmco-sa.com)

## 1. COMPANY LOCATION





### OUR PRODUCTS

#### PROCUREMENT CAPABILITIES:

**Major categories of material and/or equipment that have been procured over the past ELEVEN years.**

During the last five 11 years, we have procured SR 7.2.5 Billion worth of various types of materials, small tools, construction supplies, machinery, equipment, Pal A/C Ducting Materials, electrical/electronic equipment, HVAC Units and other special types of equipment for projects, Wholesale and Retail outlets of various subsidiaries and affiliates.

#### LOGISTICS:

Products could be made available to any sites anywhere in the world, subject to government import/export licensing regulations. It is our understanding that efficient logistics management ensures international projects cost--effectiveness and completion as quickly as possible.

#### PROJECT COST PLANNING:

Project cost planning service deals with the arrangement of financial terms and conditions for the mutual benefit of all parties, particularly with regard to re-invoicing and management of currency risk. It is understood that cost planning is critical to cost and convenience in the execution of any project of international scale. Being an expert in this domain enable us to provide customers with a service that can help maximizing the amount of VAT that can be retrieved. The above can only be achieved by utilizing proper financial processes that take into consideration the individual company's legal structure

#### SHIPPING:

- The Company co-ordinates importation of equipment for:
- ⇒ Installation at the end user location
  - ⇒ Installation at company's facilities management center
  - ⇒ use as spares for exchange with faulty equipment
  - ⇒ Faulty equipment is rerouted as per client instructions to an agreed upon destination; moreover, a detailed inventory records are maintained for spare equipment, used ones and returned goods.



All equipment shipped across borders is subject to customs regulations and delays. Procurement Division will work to ensure that all regulations are adhered to, accordingly minimizing delays. All shipments are compliant with US regulations governing the end destination of products.

#### **INSURANCE:**

Insurance provided is based on value provided by customer, for equipment in use, in storage a various facilities management center, and equipment kept at company's storage facilities.

#### **DOCUMENTATION:**

Prior to shipment, the Company will prepare all necessary export documentation, such as pro forma invoices and certificates of origin, and apply for required import licenses. As part of this process a complete equipment inventory is prepared, detailing systems, products, and their serial numbers.

#### **ADDITIONAL SERVICES:**

Additional services, such as delivery to a central point for staging followed by shipment to local sites, are also available.

#### **MATERIAL & EQUIPMENT FOR KINGDOM PROJECTS/ORDERED & RECEIVED**

Client was regularly supplied special brands of materials such as “Carlisle” EPDM Membranes and related products for water proofing also “Pal Phenol panel boards and related products for A/C Ducting. Annual orders received from Clients for the above materials amounts to SR15 million. Frequency and size of orders depend on awarded lump sum turnkey projects that are required such as construction supplies, equipment, electrical panel boards, electronics equipment, HVAC cooling units and instrument control panels.

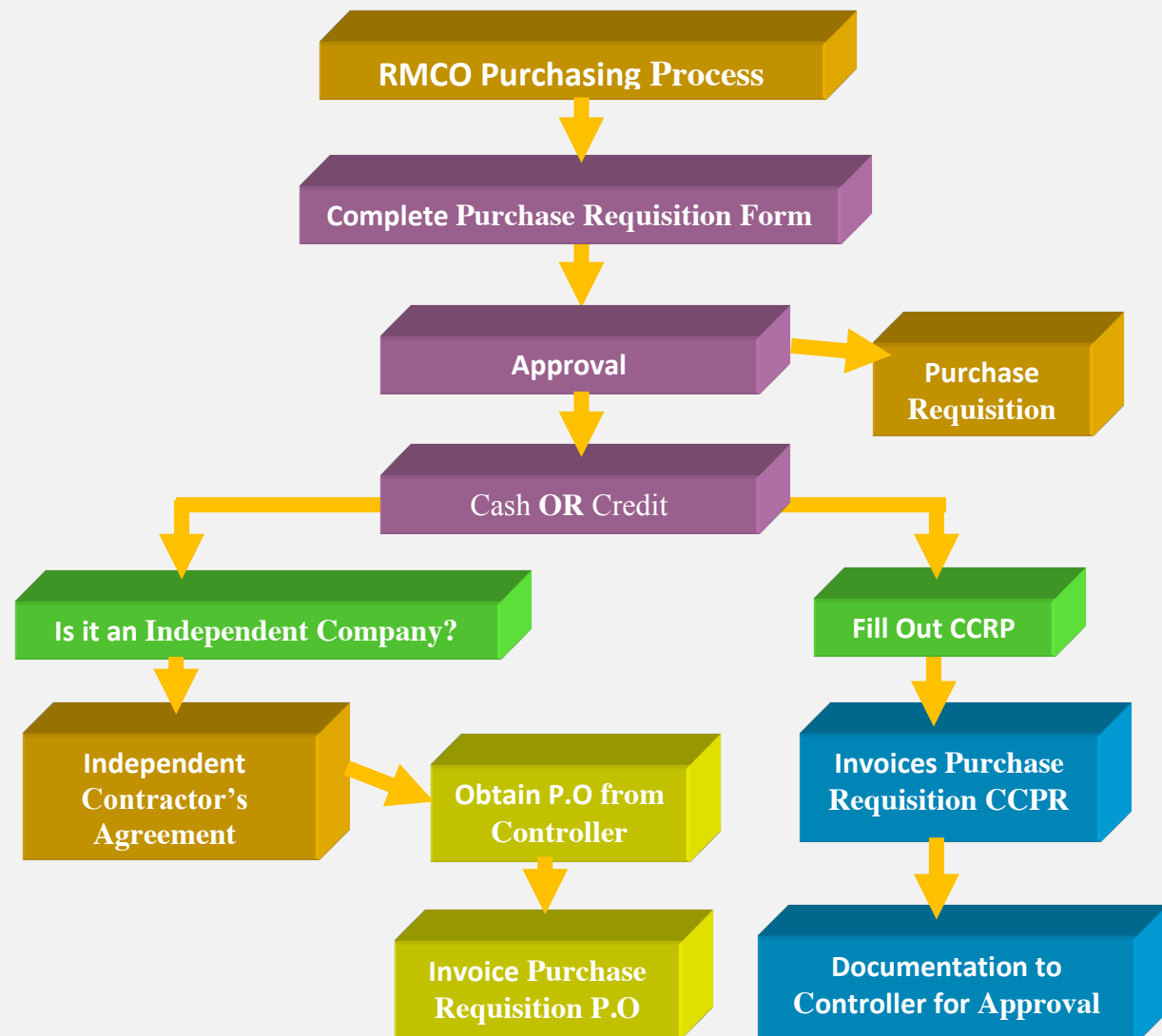
#### **COMPANY'S METHODOLOGY IN MATERIALS STORAGE AND HANDLING:**

The material storage and handling unit is staffed by proficient personnel and operators to ensure proper inventory of materials as far as minimum level is concerned, and shelf--life of various products are constantly monitored and properly identified in individual racks. Special care is always given to avoid mishandling of any item.

## Detail of timeliness, design and working conformity of materials and/or equipment procured by the Company

Our Procurement Unit and QA/QC Unit will be responsible for the appropriateness, design and working conformity of materials and/or equipment sourced by our division, or sub-contractor. The Procurement Unit is required to render regular reports on the status of materials/equipment placed on order and monitor the movement of the materials taking into consideration the critical project milestones, thus avoiding any delay in project execution. The QA/QC Unit will be responsible for the quality of the materials/equipment received and render such reports as may be necessary. Aberrant items will be reported immediately and actions subsequently implemented to avoid any impact in the project execution timetable.

### Flow Chart shows the steps to purchasing process



### 3. CONSTRUCTION



**RMCO** Company is a licensed design/build firm with a staff of professionals skilled in construction management. RMCO was established in 2005 to fulfill the needs of the community as a commercial builder. For the last eleven years, the RMCO name in construction has stood for **PERFORMANCE** with **QUALITY & INTEGRITY**. We deliver superior value through a commitment to client partnerships, an understanding of a challenging construction industry and employment of innovative building methods.

RMCO, even as you read this, is bringing to bear its wealth of engineering and construction expertise to develop infrastructure aim further propelling the nation Forward, in to the future. The works covered in this Profile are for all types of construction work. These include Excavation, Grading, Cutting and Filling, Backfilling, Masonry, Demolition and Buildup, Wall-siding, Installation of new Decorative Siding, Board Cladding and Mineral finish, External and Internal Carpentry, general Electrical works, Re-roofing, General Painting, Structural steel, External Façade face lifting, General Welding and Pipe Works, Fire Protection and Alarm Systems, Concrete Repair and Injection, Installation of Sports Flooring, Air-Conditioning, Climate Control Systems, and other Civil, Electrical and Mechanical works.

**Project Name : Power Plant IPP II (Rabigh).**

**Client Name: AL MORJAN Cont. CO.**

**Main Contractor: SAMSUNG C&T.**

**Civil Contractor: RMCO.**

**Project: Civil Buildings, Road & Lighting Pole Works.**

**Project Value: 35,424,355.00**

**Started From :September 2013 To August 2016**

### **DESCRIPTION OF WORKS.**

- 1. Road Works, Security gate, Structure Work, Making of Water Tanks, Control Buildings, Light Poles and sidewalks.**
- 2.Excavation of all types of soil including preparation of bedding, backfilling with approved material with standardized compaction, watering and the removal of excavated material.**
- 2. Implementation of Standardized Form work according to the client specifications.**
- 3. Supply and install of all type of materials including in the RCC structures as per drawings and specifications.**
- 4. Project comprises of Excavation, Leveling, grading, Lean RCC concrete base, Foundations, RCC walls, Structure works, Tilling, Painting, Plumbing with testing & Finishing.**
- 5. Mechanical complete building structure named as Workshop Ware House. Includes all RCC Foundations, Steel Structural works, brick Walls ETC.**





**RMCO Site Office & Lay Down Area Facilities IPP II SAMSUNG SITE.**

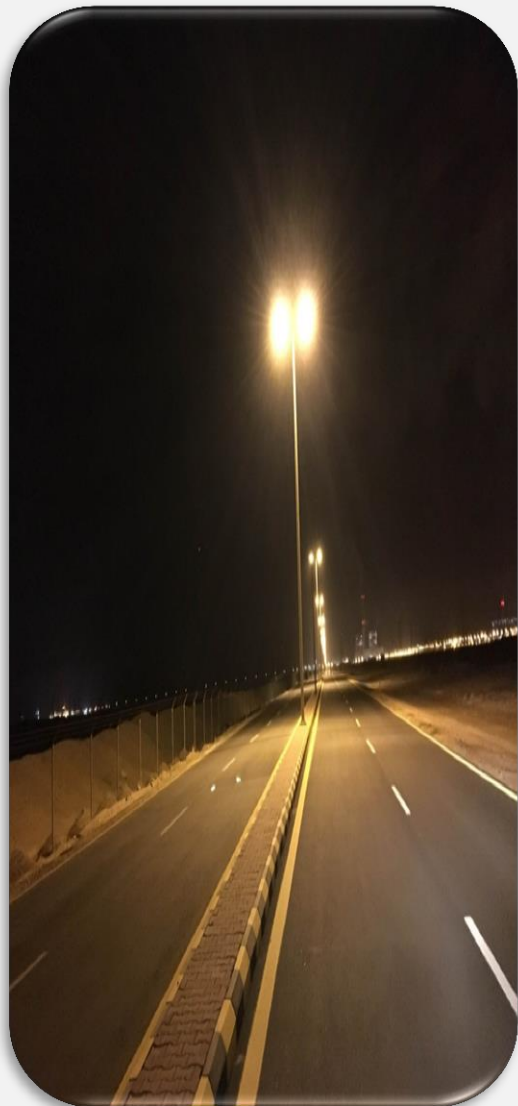


## SAMSUNG IPP. II Access Road Project.

The construction of Access Road from OLD Jeddah –Yanbu express Road to IPP II Power plant Rabigh. The demolition of old road was commenced on 15th January, 2011. The project includes Site surveys, land marking, Excavation, Backfilling, Leveling grading along with the construction of asphalt road and repaving, signage & road marking, installation of traffic signal, lighting, construction of drainage structures and guard rail, construction of duct bunks, construction of side walk and curb stones, installation of fence around transformers.

Detailed Scope of work:

Asphalt Road site Preparation & works	Sub grade including excavation and backfilling, site cleaning, grubbing, watering etc. After that a layer of sub base course and base course is made. Then surface course (normal asphalt & super pave asphalt) is put evenly twice.
Raised Concrete curb with gutter	Fabrication and installation of curb stones along the asphalt road.
Square and Walkway	Site is prepared by earthworks, then 5% lime-bound gravel is laid. Then the C35 concrete square is casted at the site which includes formwork, installing rebar, contraction joint, construction joint and expansion joint. Also, pre casting and installation of concrete curb stones. The cement square brick walk way and floor is built by cement which includes the packed soil, lime-bound gravel and bound coarse sand.
Storm Drainage System	In this system, the catch basin is built with all possible requirements and a heavy duty steel strainer is installed. This system also includes a drain pipe.
Road Signs Warning	Installation of several road signs like double headed arrow sign, stop and speed limit signs, directional arrow markings on pavement, edge marking, centre marking and installation of a crash bar with foundation and painting.



**RMCO**

ARAB MODERN COMPANY [www.rmco-sa.com](http://www.rmco-sa.com)





## Civil Construction Project With SAMSUNG C&T;

This contract has been signed between SAMSUNG C&T –and Rabigh Modern Company (RMCO), the purpose of this contract is construction to build Several new buildings inside the power plant which were designed and to be used as power plant six control buildings, Admin building, warehouse buildings works include all construction activities, material equipment, manpower and all connected item. Duration of this contract is two years. The work was as follows

- **Civil, Structural and Architectural Works** - With the implementation of latest architectural designs and quality proven material, we undertook Civil and Architectural Works / Building Works. These services were acclaimed for their effectiveness and reliability and our experience in this field is high. Many services were used for building, involving machine foundations, office rooms, equipment houses and security systems. In addition to these, we undertake structural steel work for heavy structures such as built-up columns & girders etc.
- **External works which includes parking, retaining wall, paving and curbstone works** – we had accomplished the parking's of cars with interlock for the ground providing various manholes for the drainage of water during rain etc. with great design criteria. The fencing for the complete project was also our work.
- **Heating, ventilating and Air Conditioning Works** – We have supplied and installed various air-conditioning units for this new building. We have used package units as well as mini split units for this project. All the duct works were carried out according to standard specifications of the client.
- **Electrical Works** – There are various electrical works throughout the building starting from wiring, supply and installation of transformer to the last switch boards and panels. All the electrical work we re executed as per the Quality manual and safety manual with all the standard specifications of the client.
- **Fire Protection and Fire detection works** – Each and every room were installed with fire detectors and the complete fire alarm system was installed in this building according to the modern standards. Fire hose system was also installed with easy access.
- **Plumbing and Drainage works** – Plumbing and drainage works were executed as per the drawings submitted by the ministry. All the materials used for both the plumbing and drainage systems were high quality, durable and reliable and as per the standards.
- All the necessary Utility Tie-in and demolition works
- PA/GA system works
- Telephone and Data systems.

## MAIN ADMIN BUILDING IPP II (SAMSUNG)





## Six Control Buildings IPP II Power Plant (SAMSUNG C&T).







## Ware House & Workshop Building.



## Water Treatment RCC Tanks.





## PETROFAC SAUDI ARABIA CO. LTD.

### DESCRIPTION OF WORKS.

1. Excavation of all types of soil including preparation of bedding, backfilling with approved material with standardized compaction, watering and the removal of excavated material.
2. Implementation of Standardized Form work according to the specifications.
3. Supply and install of all type of materials including in the RCC structures as per drawings and specifications.
4. Project comprises of Excavation, Leveling, grading, Lean RCC concrete base, Foundations, RCC walls, Structure works, Tilling, Painting, Plumbing with testing & Finishing.

**Works Done:** Road Works, Security gate, Structure Work, Making of Water Tanks, Control Buildings, Light Poles and side walks.

### RMCO Camp Office & Lay Down Facilites PETROFAC Site.





**Client: Petro Rabigh.**

**Contractor: Petrofac. Co. Ltd.**

**Civil Contractor: RMCO.**

**Project: WASTE WATER TREATMENT PLANT (Complete Package)**

**Project Start: Aril 2013**

**Expecting Handover: December 2016.**

**Contract Amount: SR 45,411,522,00/- Scope Of Work :**

- 1. Soil Replacement Of Complete Site.**
- 2. Effluent Basin (Wall).**
- 3. Equalisation Basin (Wall).**
- 4. Aeration Basin & MBBR Tanks.**
- 5. Washdown Utility Water Pump.**
- 6. Contaminated Surface Water Transfer Pump.**
- 7. Waste Water Treatment Area SYS Lift Station.**
- 8. Waste Water Treatment Area SYS Lift Station Pump.**
- 9. SWS Lift Station.**
- 10. SWS Lift Station Pump.**
- 11. Skimmed Oil Pit.**
- 12. Filter Back Wash Water Pump.**
- 13. Pipe's Sleeper.**
- 14. DYKE Walls.**
- 15. Asphalt And Access Road.**

**This contract has been signed between Petrofac –and Rabigh Modern Company (RMCO) the purpose of this contract is construction to build Several new buildings inside the power plant which were designed and to be used as power plant six control buildings, Admin building, warehouse buildings works include all construction activities, materials equipments, manpower and all connected item. Duration of this contract is two years. The work was as follows.**

**□ Civil, Structural and Architectural Works - With the implementation of latest architectural designs and quality proven material, we undertook Civil and Architectural Works / Building Works. These services were acclaimed for their effectiveness and reliability and our experience in this field is high. Many services were used for building, involving machine foundations, office rooms, equipment houses and security systems. In addition to these, we undertake structural steel work for heavy structures such as built-up columns & girders etc.**

**□ External works which includes parking, retaining wall, paving and curbstone works –we had accomplished the parking’s of cars with interlock for the ground providing various manholes for the drainage of water during rain etc. with great design criteria. The fencing for the complete compound for the building was also our work.**



1. Land Excavation & Replacement of Soil.
2. IFR, CR, DR Tank/ NH3 Tank / Sepsphere Foundation.
3. Process Interface Buildings (PIB).
4. Substation Buildings.
5. Pipe Racks, Cable Trays, Electrecal & Instrumental Support Foundations.
6. Roads, Access Roads, Paving & Fencing.

## Project Gallery:



















**Client: DOOSAN HEAVY INDUSTRIES.**

**Civil Contractor: RMCO.**

**Project: CIVIL WORKS.**

**Contract Amount: 43'500'000/-**

**Project with DOOSAN HEAVY INDUSTRIES (POWERPLANT 2).**

RMCO has executed several projects with DOOSAN Heavy Industries during our tenure. It includes backfilling, compaction and some construction works. The current work going on with DOOSAN are the following

- |               |   |
|---------------|---|
| Earth Works   | ➤ The earth works include the excavation, control and testing of the complete earth works like soil excavation, rock chiseling etc.   |
| Backfilling   | ➤ The backfilling works include the usage of selected fill, screened fill and imported fill material for the purpose of backfilling.  |
| Disposal      | ➤ The disposal of the excavated soil and other materials in the site related to the work course.  |
| Concrete Work | ➤ The concrete works for the duct banks include the formwork with all supports and scaffoldings. The pipes for the laying of cables and the duct banks are concrete filled. Lean concrete and normal concrete are used for this work. |



[www.rmco-sa.com](http://www.rmco-sa.com)



**RMCO**

ARABIAN MODERN COMPANY [www.rmco-sa.com](http://www.rmco-sa.com)





**RMCO**

ARABIAN MODERN COMPANY [www.rmco-sa.com](http://www.rmco-sa.com)



**sepco III**  
**山东电建**



**RMCO**  
ASHEN MODERN COMPANY

## SEPCO III PROJECT (POWER PLANT):

Client: DOOSAN HEAVY INDUSTRIES.

Civil Contractor: RMCO.

Project: CIVIL WORKS.

Contract Amount: 31'670'000/-

In SEPCO we deal with major construction works for the development of concrete bases for the pipelines coming from the Shipyard to the reservoir of fuel. The work carried out by us include the following

Earthworks	➤ Trimming, leveling , grading, placing, spreading, mixing, watering, backfilling, compacting to the specified proctor density, testing, sorting, loading, transport, trail fieldsetc.
Backfilling	➤ Filling using selected excavated materials brought from external quarry. We do perfect compaction with our modern compacting equipments for a perfect result in accordance with the drawings and specifications.
Excavation	➤ Excavation is carried out for various depth according to the specifications required including breaking of coral rocks, excavation of soil, dewatering, timbering, slopes and backgroundcompaction.
Concreting	➤ It includes bedding course casting, casting foundation, expanded joint filling, reinforcement, formwork, embedding of plate and anchor bolts, waterproofing, concrete grouting etc. Thereare ➤ PCC(plane cement concrete) for underlayer of foundation and RCC(reinforced cement concrete) for foundation of piperacks, ➤ trench, pit, tunnel etc.
Formwork	➤ We do all type of formworks including design, fixing and removal formwork of approved quality for cast-in-situ, plain or reinforced concrete works of any type section for all elevations.
Reinforcement	➤ cleaning, de-rusting, straightening, cutting, bending, binding in position with annealed wires or welding, supporting, providing concretecoverblocks,pins,separators',chairs,bindingwires,testing and preparation of bar bending schedules etc.
Galvanization	➤ Galvanization and painting is done for the reinforcement in order to prevent corrosion. Also concrete waterproofing and anticorrosion treatment.



**RMCO**  
ASHEN MODERN COMPANY

www.rmco-sa.com



Non shrink grouting	➤ Non shrink grouting for reinforced concrete work is done at all levels which is part of the work. After that ,PVC water stops are being filled as per the requirements of the design.
Precast Concrete cover	➤ The provision and fitting precast design mix cement concrete with graded aggregate and the required admixtures for reinforced

We are working on the asphalt work for all the interior roads in the RABEC power plant which contains the following works

Asphalt Road site Preparation & works	Sub grade including excavation and backfilling, site cleaning, grubbing, watering etc. After that a layer of sub base course and base course is made. Then surface course (normal asphalt & super pave asphalt) is put evenly twice.
Raised Concrete curb with gutter	Fabrication and installation of curb stones along the asphalt road.
Square and Walkway	Site is prepared by earthworks, then 5% lime-bound gravel is laid. Then the C35 concrete square is casted at the site which includes formwork, installing rebar, contraction joint, construction joint and expansion joint. Also, precasting and installation of concrete curb stones. The cement square brick walk way and floor is built by cement which includes the packed soil, lime-bound gravel and bound coarse sand.
Storm Drainage System	In this system, the catch basin is built with all possible requirements and a heavy duty steel strainer is installed. This system also includes a drain pipe.
Road Signs Warning	Installation of several road signs like double headed arrow sign, stop and speed limit signs, directional arrow markings on pavement, edge marking, centre marking and installation of a crash bar with foundation and painting.





**RMCO**

ARABIAN MODERN COMPANY [www.rmco-sa.com](http://www.rmco-sa.com)





Client: **MINISTRY OF ECONOMY AND PLANING.**

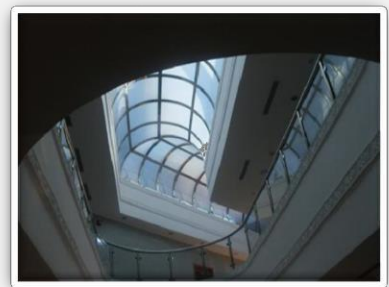
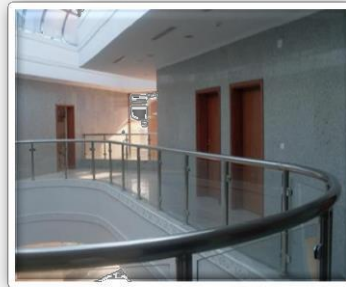
Civil Contractor: **RMCO.**

Project: **STATISTICS & INFORMATION BUILDING – AL MADINA BRANCH.**

This contract has been signed between the Ministry of Economy and Planning / Department of statistics & Information –and Rabigh Modern Company (RMCO), the purpose from this contract is to construct and build the new building of Central Department of Statistics & Information Branch of Al-Madina Branch, the works include all construction activities, materials equipment, manpower and all connected item. Duration of this contract is two years. The work was as follows

- **Civil, Structural and Architectural Works** - With the implementation of latest architectural designs and quality proven material, we undertook Civil and Architectural Works / Building Works. These services were acclaimed for their effectiveness and reliability and our experience in this field is high. Many services were used for building, involving machine foundations, office rooms, equipment houses and security systems. In addition to these, we undertake structural steel work for heavy structures such as built-up columns & girders etc.
  - **External works which includes parking, retaining wall, paving and curbstone works** – we had accomplished the parking's of cars with interlock for the ground providing various manholes for the drainage of water during rain etc. with great design criteria. The fencing for the complete compound for the building was also our work.
  - **Heating, ventilating and Air Conditioning Works** – We have supplied and installed various air-conditioning units for this new building. We have used package units as well as mini split units for this project. All the duct works were carried out according to standard specifications of the ministry.
  - **Electrical Works** – There are various electrical works throughout the building starting from wiring, supply and installation of transformer to the last switch boards and panels. All the electrical work were executed as per the Quality manual and safety manual with all the standard specifications of the ministry.
  - **Fire Protection and Fire detection works** – Each and every room were installed with fire detectors and the complete fire alarm system was installed in this building according to the modern standards. Fire hose system was also installed with easy access.
  - **Plumbing and Drainage works** – Plumbing and drainage works were executed as per the drawings submitted by the ministry. All the materials used for both the plumbing and drainage systems were high quality, durable and reliable and as per the standards.
- All the necessary Utility Tie-in and demolition works
- PA/GA system works





**RMCO**

ARABIAN MODERN COMPANY [www.rmco-sa.com](http://www.rmco-sa.com)

**Client: PETRO RABIGH.**

**Contractor: RMCO.**

**Project: PETRO RABIGH ACCESS ROAD (EXIT 927) COMPLETE PACKAGE..**

**Start date: 15 jan 2011.**

**Project Handover Date: 18<sup>th</sup> April 2011**

**Contract Amount: SR-15'224'541.00/-**

### **DESCRIPTION OF WORK**

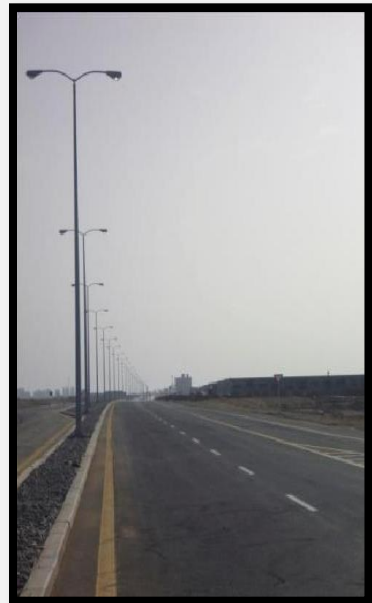
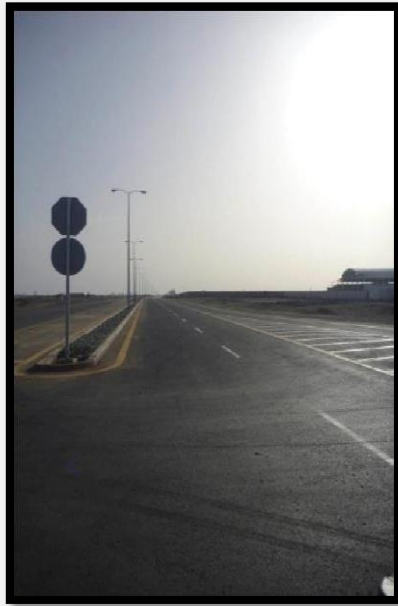
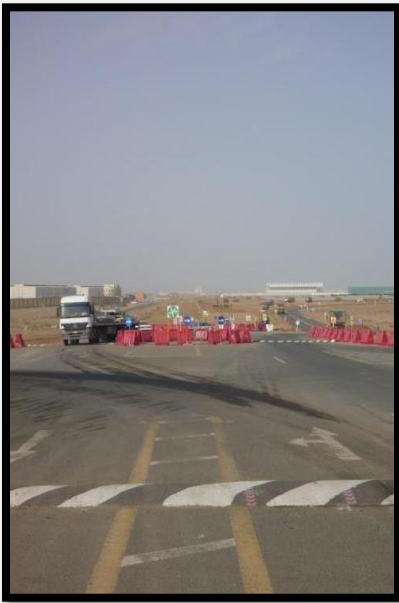
1. Access Road – Permanent 5.1 km in length dual carriageway with 5 m wide kerb median divided 2 lane in each direction, paved road with paved shoulders, starting from the Jeddah- Yanbu Highway with all the markings and signage, concrete sidewalk, guard rails, drainage culverts, to serve the existing Rabigh Refining and Petro chemical company's Complex and the adjoining Industrial area, including pavement demolition and connecting existing local roads to the proposed access road.
2. The earthworks for this project include the demolition of the existing roads, excavation of the complete layers, trenching, filling new layers as per the ARAMCO standards with quality fill materials, compaction test and Tolerance.
3. A complete safety team along with all the standard procedures was followed for each and every step of the project. Safety was the first measure we took to execute our project and which was a great success.

4. We had a separate team for Quality Assurance/Control for the installation of various equipments and throughout the project. Their main function was to comply fully with the manufacturer's instructions, including each step in sequence. Complying with specified standards as a minimum quality for the work except when more stringent tolerances, codes, or specified requirements indicate higher standards or more precise workmanship.
5. RMCO supplied and installed all the required materials to provide lighting to Access Road between Jeddah-Yanbu Highway exit927 and SEC substation towards Petro Rabigh Complex, Rabigh.
6. RMCO supplied and installed two new 75kVA, 13.8 KV – 0.38/0.22 KV, 60Hz, 4-wire, oil filled, pad mounted, loop feed transformer complete with all accessories and foundation.
7. RMCO supplied and installed high voltage, medium voltage, low voltage cables, over current protective devices and grounding with specified standards as per ARAMCO.
8. RMCO supplied and installed 13.6kV copper cables, 3/C 70 mm<sup>2</sup> with concentric neutral XLPE/PVC insulated between the new 75kVA transformer and the power supply.
9. RMCO supplied and installed new Outdoor Lighting Panels 380/220 VAC with ARAMCO standards with 15 branch circuits each one100AF/50AT,3 pole complete with accessories and foundation.
10. RMCO supplied and installed the Street Lighting Poles with complete hand hole, fused terminals, base plate and foundation including all accessories as per Ministry of Municipal Rural Affairs (MMRA)specifications.
11. All the works related to this project where completely handled by RMCO and the road was open within 4 months. All the measures such as Safety, Quality Assurance/Control, and Inspection etc. were taken into consideration at the most.









## PROJECTS COMPETED SUCCESSFULLY

Sr. #	Description	Location	Company	Date Granted	Date Completed
1	IPP 2 Power plant civil work & buildings project.	Rabigh	Samsung C&T AL-MORJAN	01/07/2014	30/07/2016
2	General Civil Pre-Cast & Road paving Work.	Rabigh	GS ConstructionCO.	18/06/2014	26/12/2015
3	Civil Construction project.	Rabigh	DOOSAN HEAVY IND,	12-08-2013	23-06-2015
4.	Civil Project Comp. Package	Rabigh	GS Construction co.	20-03-2012	26-08-2013
3	Construction of new Arabian Palm Hotel in Rabigh City	Rabigh	RMCO Ltd.	5/8/2011	20/12/11
4	Petro Rabigh Road 5.1 km with signals & lighting poles	Petro Rabigh	Petro Rabigh	20/01/11	20/05/11
5	Drilling & Installation of Bored Cast in-Situ Piles	Jubail Industrial City	Al--YusrTowsend& Bottom Co. Ltd.	6/1/2010	7/7/2010
6	Town Center Building Finishing	King Abdullah University, ThuwAl	Saudi Aramco	7/13/2009	4/19/2010
7	Emergency Works At Rabigh Olefin Plants	Rabigh Olefin Plants	JGC Gulf International Ltd.	5/22/2009	25/07/09
8	Leveling, Compacting & Backfilling	Rabigh	Emrah Ismael Sendogan& Partner Contracting Co.	4/14/2009	4/29/2009
9	Excavation & Backfill for Rabigh Power Plant Stage V Extension Project Rabigh	Rabigh Power Plant	Kettaneh Construction	4/4/2009	25/05/10
10	Installation of Different Sewage Pipe (N-Road)	King Abdullah Economic City	Saudi Binladin Group	5/25/2008	10/12/2008
11	Supply & Laying of Asphalt as per Aramco St&ard	RabighOlefini Plant (Hitachi Rabigh Project-UO1)	M.S. Al Suwaidi Services Co. Ltd.	5/23/2008	6/6/2010
12	Staff & Workers Temporary Accommodation-Camp Facilities	Rabigh	National Contracting Co. (NCC)	8/13/2008	25/03/09
13	Excavation & Backfill for Rabigh Power Plant Stage V Extension Project Rabigh	Rabigh Power Plant	(DDCC) Diamond	5/7/2008	20/08/09
14	Painting Works - Internal & External	Petro Rabigh	ATCO-A.A. Turki Group of Companies	10/21/2007	11/15/2007
15	Supply-Rental of DifferentEquipments	Kharasan Mountain, Rabigh	Al Safwa Cement	14/08/07	30/08/08
16	Supply & Installation of Security Fence (SSD 3) as per ARAMCO st&ard inside Petro Rabigh	Petro Rabigh	TEKFEN Construction & Installation Co.	15/05/07	25/10/07
17	Development Work For Temp. site Camp at PC3 Rabigh Project	Petro Rabigh	OlayanDescon Industrial Company Ltd.	1/22/2007	15/08/07
18	Removal & Replacement of Asbestos Pipes	Petro Rabigh	IsamKabbani& Partners Co.	8/23/2006	9/22/2006



19	Two(2) Stories Building	Al MadinAh	Ministry of Economic (Riyadh)	14/04/08	4/8/2008
----	-------------------------	------------	----------------------------------	----------	----------

#### 4. INDUSTRIAL SERVICES – ELECTRO MECHANICAL



RMCO has created a new wing to provide and to address the industrial service needs in the Plants, refineries and Petro-Chemical Industries. The addition of this Department Wing will make RMCO comprehensively and industrially competitive to fully deal with client's project construction to Industrial Plant requirements. This concept enables RMCO to spread its Construction and industrial capabilities imposing a bolder market benchmark to services such as

- Industrial / Storage Tank Cleaning
- Process Piping and Steel Structural (Fabrication, Welding & Erection)
- Protective Coating and Grit Blasting

RMCO capitalizes on the expertise of its highly skilled and highly trained manpower to address the following Industrial problems and meets the Clients requirements with high standards of workmanship, quality of work without compromising safety. With these principles, RMCO assures every Client of timely work completion.

#### TARGETED INDUSTRIES

- Refineries
- Petrochemical
- Terminal and Bulk Storage
- Power Plant
- Heavy Industrial

#### MECHANICAL SERVICES

- Mechanical Construction and Plant modification
- Pipe Welding and Fabrication
- Engineering and Technical Support
- Plant T&I, Maintenance Services

#### PIPING AND STRUCTURAL WORKS

- Erection of Process Piping and process Equipment
- Fabrication and Welding
- Qualified Welders for all Welding Procedures
- Pipe Line modification and Upgrading
- Blasting and Painting as per Client Standards
- Insulation and Cladding Works
- Hydrostatic Testing and Flushing
- Advance NDT
- Structural Fabrication Work of Columns Trusses and Pipe Support, etc.



**RMCO**

ALBEN MODERN COMPANY [www.rmco-sa.com](http://www.rmco-sa.com)



RMCO is able to advice on the most appropriate specification for a project to ensure that the cost of surface preparation and coating works is aligned with the future life required from plant and equipment.

### PROGRAMMABLE LOGIC CONTROL SECTION

Was started as a proprietary firm to offer products, systems and solutions to process industry right from a single critical component to complex integrated system. It's mainly started to provide following services to the industries

- System Integration, Installations , Commissioning, Operating & Training
- Maintenance and servicing of Industrial control and automation systems used for process control.
- Trading to provide spares for the imported systems used process industry to maintain these costly equipment's.

### PRODUCT AND TECHNOLOGIES

- We offer total solution for Industrial Automation to OEM / process Industry based on SCADA,DCS,PLC, programmable controllers, PID / Fuzzy Logic controller / Actuators &AC/DC drives etc. manufactured by well known companies as per requirement of customers
- Two / four Line & graphic display with touch screen or keypads & terminals & industrial PC's for man machine interface.
- We offer axis & motion controls / positioners leaner & rotary / absolute & incremental encoders / servo & stepper motors etc.
- We offer sensors for proximity / optical / vibration & level ultrasonic etc.
- We offer instruments for measurement of pressure / flow / temp. / pH / V / power etc.
- We offer load cells & weighing system for continuous & batch weighing.
- We provide DG synchronization & auto source changeover system.
- We offer all types Electrical control panels for process plants.

### ENGINEERING SOLUTIONS AND CONSULTING SERVICES

We are widely recognized for our consultancy for industrial automation. We undergo the following steps

- Systems Requirements Study
- System Design
- Control philosophy, Implementation, Design Documentation
- Engineering Design and Development System Acceptance Evaluation
- Handling Over
- Training after development
- The various engineering services & solutions extended by our trained technical team are



## 1. SERVICES



**RMCO** proud to deliver our quality standardized facilities cater for all client needs. We are providing **Residential & Quality catering services** as per our client needs & demands, from the portacabin labor camp, serviced accommodations, rental buildings up to the RMCO owned **luxurious THREE STAR Hotels Residence in ARABIAN PALM HOTEL.**

To fulfill the Clients primary needs for relocation we are providing one stop solutions to our valued clients, such as Accommodation, Food services, & all transport means.

- Hotels & Furnished / Non furnished Apartments.
- Quality food & Catering Services.
- Transportation Means from the Luxury 7 Seat Vehicles up to Labor 50 seat busses.
- Water Supply..
- Supply of manpower as per project requirements
- Project Safety Maintenance Team.

### **FLAGSHIP PROJECT OF RMCO (The Arabian Palm Hotels & Restaurants)**



**RMCO**

ARABIAN MODERN COMPANY

[www.rmco-sa.com](http://www.rmco-sa.com)

**RMCO Providing Services to the clients as below :**



Sr. No.	Description	Locati	Compan
1	Accommodation & Catering	RABIGH CITY	TALKI LTD.
2	Accommodation & Catering	INKAS RABIGH	SINOPEC LTD.
3	Accommodation & Catering	Rabigh Refining & Petrochemical Co.	JGC Arabia Ltd.
	Accommodation	RABIGH CITY	INNABENSA CO.
5	Accommodation & Transportation.	RABIGH CITY	MINIMAX CO.
4	Accommodation & Catering	Rabigh Refining & Petrochemical Co.	Tekfen Construction & Installation Inc.
5	Accommodation & Catering	Rabigh Refining & Petrochemical Co.	Technimont ICB Pvt. Ltd.
6	Accommodation & Catering	KAUST-Thuwal	Abagah Contracting Est.
7	Accommodation & Catering	Rabigh Power Plant	Karrena Arabia Co. Ltd.
8	Accommodation	Rabigh Refining & Petrochemical Co.	Mitsubishi Heavy Industries Ltd.
9	Accommodation	Rabigh Refining & Petrochemical Co.	Yokogawa Services Saudi Arabia Ltd.
10	Accommodation	Rabigh Refining & Petrochemical Co.	Nesma& Partners Contracting Company Ltd. Al---Khobar
11	Accommodation	Rabigh Refining & Petrochemical Co.	MTE Studios FZ-LLC Dubai U.A.E.
12	Accommodation	Rabigh Refining & Petrochemical Co.	Carlo Gavazzi Arabia Co.
13	Accommodation	Rabigh Power Plant	Vasavi Power Services Pvt. Ltd.
14	Accommodation	Rabigh Refining & Petrochemical Co.	Sojitz Corporation
15	Accommodation	Rabigh Refining & Petrochemical Co.	Mohammad Al-Mojil Group
16	Catering	Rabigh	Gulf Power International Company
17	OFFICE RENTAL	Rabigh	Mitsui Engineering & Shipbuilding Arabia Ltd.



**RMCO**

ARABIAN MODERN COMPANY www.rmco-sa.com

ACCOMMODATIONS





## Labour Camps



## WATER SUPPLY SERVICES

DESCRIPTION	LOCATION	COMPANY
Potable Water Supply	Rabigh Refining & Petrochemical Co.	Tecnement ICB Pvt. Ltd.
Drinking Water Supply	Rabigh Refining & Petrochemical Co.	Tecnimont ICB Pvt. Ltd.
Supply of Portable And Drinking	Rabigh Refining & Petrochemical Co.	Tekfen Construction & Installation Co.
Supply of Raw Water	Rabigh Powe Plant	National Contracting Co. Ltd. (NCC)
Supply of Portable Water	Al Zamil Project Site Rabigh	Al Zamil Metal Works Factory
Supply of Hydro Test Water for Stainless Steel	Hadida Project Site At Rabigh	H I D A D A
Supply of Drinking and General Used	Rabigh Cable Factory	Carlo Gavazzi Arabia Co. Ltd.

## DEWATERING SERVICE AND WASTE LIQUIDS REMOVAL

DESCRIPTION	LOCATION	COMPANY
Light And heavy sludge removal And tank cleaning	Rabigh Olefin Plants Project Site Office	JGC Arabia Ltd.
Removal of Sewage Water	Rabigh Cable factory	Carlo Gavazzi Arabia Co. Ltd.
Removal of Sewage Water from Septic Tank	NCC Rabigh Camp	National Contracting Co. Ltd. (NCC)
Removal of Sewage Water	Rabigh Refining & Petrochemical Co. (Petro Rabigh)	Tekfen Construction & Installation Co. Inc.

## SUPPLY OF MANPOWER AS PER PROJECT REQUIREMENTS.

DESCRIPTION	LOCATION	COMPANY
Manpower Supply - Olefin Plants Project Rabigh (Office Personnel & Staff, Heavy And Light Driver, Skilled Workers)	Rabigh Refining & petrochemical Co.	JGC Arabia Ltd.
Manpower Supply -UOU & UO1 Project (Office Personnel & Staff, Heavy And Light Driver, Skilled Workers)	Rabigh Refining & petrochemical Co.	TEKFEN Construction And Installation Co.
Manpower Supply - (Electrical, Mechanical & Maintenance)	Rabigh Refining & petrochemical Co.	Al Zamil Metal Works
Manpower Supply-NCP Project (Office Personnel & Staff, Heavy And Light Driver, Skilled Workers)	JGC---Manifa	JGC Arabia Ltd.
Manpower Supply - Manifa Project (Office Personnel & Staff, Heavy And Light Driver, Skilled Workers)	JGC---NCP Jubal	JGC Arabia Ltd.
Manpower Supply-Petro Rabigh Phase 2 Project (Office Personnel & Staff, Heavy And Light Driver, Skilled Workers)	Rabigh Refining Petrochemical Co. (Petro Rabigh)	JGC Gulf International Ltd.
Supply of Manpower (Saudi National & Office boy)	Rabigh Refining Petrochemical Co. (Petro Rabigh)	Mitsui Engineering & Shipbuilding Arabia Ltd.



## 1. TRANSPORTATION AND HEAVY EQUIPMENT



In view of business innovation, this division is bound to provide high standard equipment such as Transportation, Heavy Equipment for Civil Jobs, Hydro--Jetting Machines, Bundle Pulling Machines, Cranes and also the manpower to competently address the clients' needs and requirements. The Transportation & Heavy equipment supply division has successfully served the needs of the Oil and Gas Industry in Saudi Arabia, generating the value added service team to meet and exceed customer expectations.

Our Equipment Maintenance Facilities in Rabigh Area are located at RMCO Compound near RMCO Head Office and Rabigh Airport, Rabigh which is staffed by:

- a) **Department Manager.**
- b) **Workshop Administrator.**
- c) **Supervisors.**
- d) **Mechanical Team.**
- e) **Auto Electricians Team.**
- f) **Body Uplifting Team.**
- g) **Tireman, Servicing& trouble shooting team.**

## TRANSPORTATION CONTRACTS

Description	Locatio	Company
Heavy Equipment Rental Supply & Services. Excavators & Dump Trucks.	FRASAN Island (JAZAN) MOI Housing Project.	EL SEIF Engineering & Contracting Co.
Heavy Equipment Rental Supply & Services. Excavators & Dump Trucks.	S-08 Project Abu Araish. MOI Housing Project.	EL SEIF Engineering & Contracting Co
Transportation Service-Olefin Plants Project Rabigh (Bus, Coaster Bus, Pick UP, Land Cruiser, Car)	Rabigh Refining & Petrochemical Co. (Petro Rabigh)	JGC Arabia Ltd
Transportation Service – UOU Project Rabigh (Bus, Coaster Bus, Pick UP, Land Cruiser, Car)	Rabigh Refining & Petrochemical Co. (Petro Rabigh)	TEKFEN Construction and Installation Co.
Transportation Service – Petro Rabigh Refinery (Bus, Coaster Bus, Pick UP, Land Cruiser, Car)	Rabigh Refining & Petrochemical Co. (Petro Rabigh)	Mitsubishi Heavy Industries Ltd.
Transportation Service – Petro Rabigh Refinery (Bus, Coaster Bus, Pick UP)	Rabigh Refining & Petrochemical Co. (Petro Rabigh)	China Dalian International Cooperation (Group)
Transportation Service - KAUST-Thuwal (Coaster Bus)	KAUST---Thuwal	Abagah Contracting Est.
Transportation Service -Petro Rabigh	Rabigh Refining & Petrochemical Co. (Petro Rabigh)	MTE Studios FZ--- LLC Dubai U.A.E.

## EQUIPMENT CONTRACTS

Description	Location	Company
Supply of Water Tanker At Petro Rabigh Olefin Plants Project	Rabigh Refining & Petrochemical Co. (Petro Rabigh)	JGC Arabia Ltd.
Supply of 10 Water Tanker At Project Site	Rabigh Refining & Petrochemical Co. (Petro Rabigh)	HIDADA
Supply of Trailers with High Bed	MMG's Various Project--- Rabigh	Mohammad Al--- Mojil Group (MMG)
Supply/Rental of Different Equipments	Kharasan Mountain, Rabigh	Al Safwa Cement

## LIST OF RMCO VEHICLES AND EQUIPMENTS



SR.	DESCRIPTION	TYPES	UNITS
1.	EXCAVATORS	Wheel TYPE	3
2.	EXCAVATORS	Crawler / Chain type	6
3	WHEEL LOADERS	966G – 950H	4
4	BACKHOE LOADERS	CAT422 – JCB 3CX	4
5	SKID LOADERS	BOBCAT S220	6
6	BULLDOZER	D9N – D8R	3
7	MOBILE CRANE	25 TON – RT	2
8	MOBILE CRANE	50-TON	1
9	BOOM TRUCK	10-TON	2
10	FORK LIFT	5- TON	2
11	TELESCOPIC FORKLIFT	JCB 540	1
12	MAN HANDLER / MANLIFT	18MTR-32MTR	5
13	ROLLER COMPACTOR	19 TON – 25 TON	3
14	LAND GRADER.	14G -14H	3
15	TRAILERS	FLAT BED	4
16	WATER TANKERS	19TON-30TON	6
17	DUMPER TRUCKS	16CUM	6
18	AIR COMPRESSORS	345CFM-400CFM	2
19	WELDING PLANTS	MULTI	2
20	POWER GENERATORS	100KVA-500KVA	6
21	DIESEL TANKER	10000 LITER	3
22	TOWER LIGHTS	4X1	8
23	BUSSES / COASTERS	50-SEAT-30SEAT	12
23	MOBIE WORKSHOPS	MULTI PURPOSE	2



**RMCO**

ARAB MODERN COMPANY [www.rmco-sa.com](http://www.rmco-sa.com)



**RMCO**

ARAB MODERN COMPANY [www.rmco-sa.com](http://www.rmco-sa.com)



## 1. VENDORSHIPS.



<b>A</b>	<b>SAUDI ARABIAN OIL COMPANY (SAUDI ARAMCO)</b>	<b>VENDOR NO</b>
01	Rabigh Modern Company Limited	10038685
<b>B</b>	<b>SAUDI ELECTRICITY COMPANY (SCECO)</b>	<b>VENDOR NO</b>
02	Rabigh Modern Company Limited	61781
<b>C</b>	<b>RABIGH REFINING &amp; PETROCHEMICAL</b>	<b>VENDOR NO</b>
03	Rabigh Modern Company Limited	100551
<b>D</b>	<b>ROYAL COMMISSION FOR JUBAIL &amp; YANBU (RCJY)</b>	<b>VENDOR NO</b>
04	Rabigh Modern Company Limited	2794

RMCO CLIENTELE	
PETRO RABIGH	MINISTRY OF ECONOMIC AFFAIRS.
PETROFAC LTD.	SAMSUNG C&T LTD
JGC ARABIA LTD.	ETE
SINOPEC	GULF POWER INTERNATIONAL CO.
SOJITZ	CARLO GAVAZI CO. LTD
SUMITOMO	BIN LADENGROUP OF CO
CCC	AL ZAMIL METAL WORKS FACTORY
FOSTER WHEELER	AL RUSHAID
MEIDEN	RABIGH PERTROCHEMICAL OGISTICS
MISHNAN CORPORATION	TEKFEN CONSTRUCTION AND INSTALLATION CO.
MITSUBISHI HEAVY INDUSTRIES	TECNIMONT
MMG	OLAYAN DESCON
ISAM KABBANI INTERNATIONAL CO.	SASAKURA ENGINEERING
KETOH CHINA	OSAIMI ENGINEERING
KHALIFA AL HILAAL EST.	VASAVI POWER SERVICES PVT. LTD.
SAFWA CEMENT	DIAMOND DUNES COMPANY
TAYLORPLAN	NATIONAL CONTRACTING CO. LTD



**RMCO**

RABIGH MODERN COMPANY [www.rmco-sa.com](http://www.rmco-sa.com)











شركة رابغ الحديثة المحدودة للتجارة والمقاولات

Rabigh Modern Company Limited Trading & Construction



**Head Office**

Kingdom of Saudi Arabia, Riyadh | Olaya, Al-Nimer Center (1)

Box300195 - Riyadh 1137 | T/F+966 (11) 461 3404 |

Webwww.rmco-sa.com | Emailinfo@rmco-sa.com

**Rabigh Branch**

Kingdom of Saudi Arabia, Rabigh | P.O. Box497 - Rabigh 21911 |

Tel+966 (19) 4993471 | Fax+966 (11) 499 1095 |

Webwww.rmco-sa.com | Emailinfo@rmco-sa.com





